



**W-9: Upper Leon Creek and W-52 Culebra Creek Capacity Relief
Contractor Outreach Meeting
ADDENDUM 2
March 7, 2024**

RESPONSES TO QUESTIONS

1. Question for W-52:

For the (3) large diameter polymer concrete manholes 144", 108" & 96" would SAWS consider fiberglass manholes instead of or in lieu of the concrete polymer?

Response: Fiberglass manholes are under evaluation for these structures. The design at Grissom Road and for the drop manholes has been revised to replace the Vortex units. Please see the updated plan sheets attached to this addendum.

CHANGES TO THE W-52 90% DRAFT PLANS

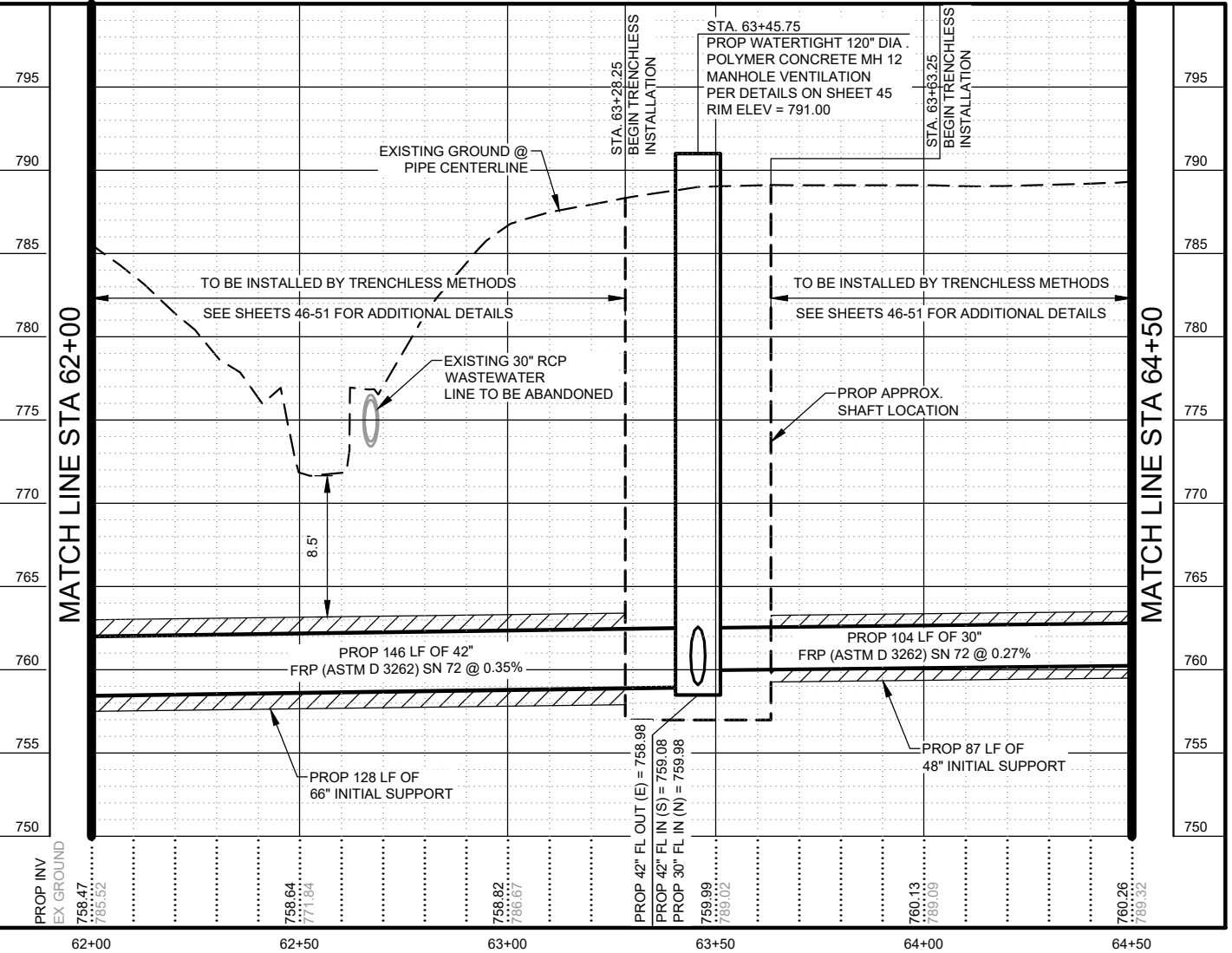
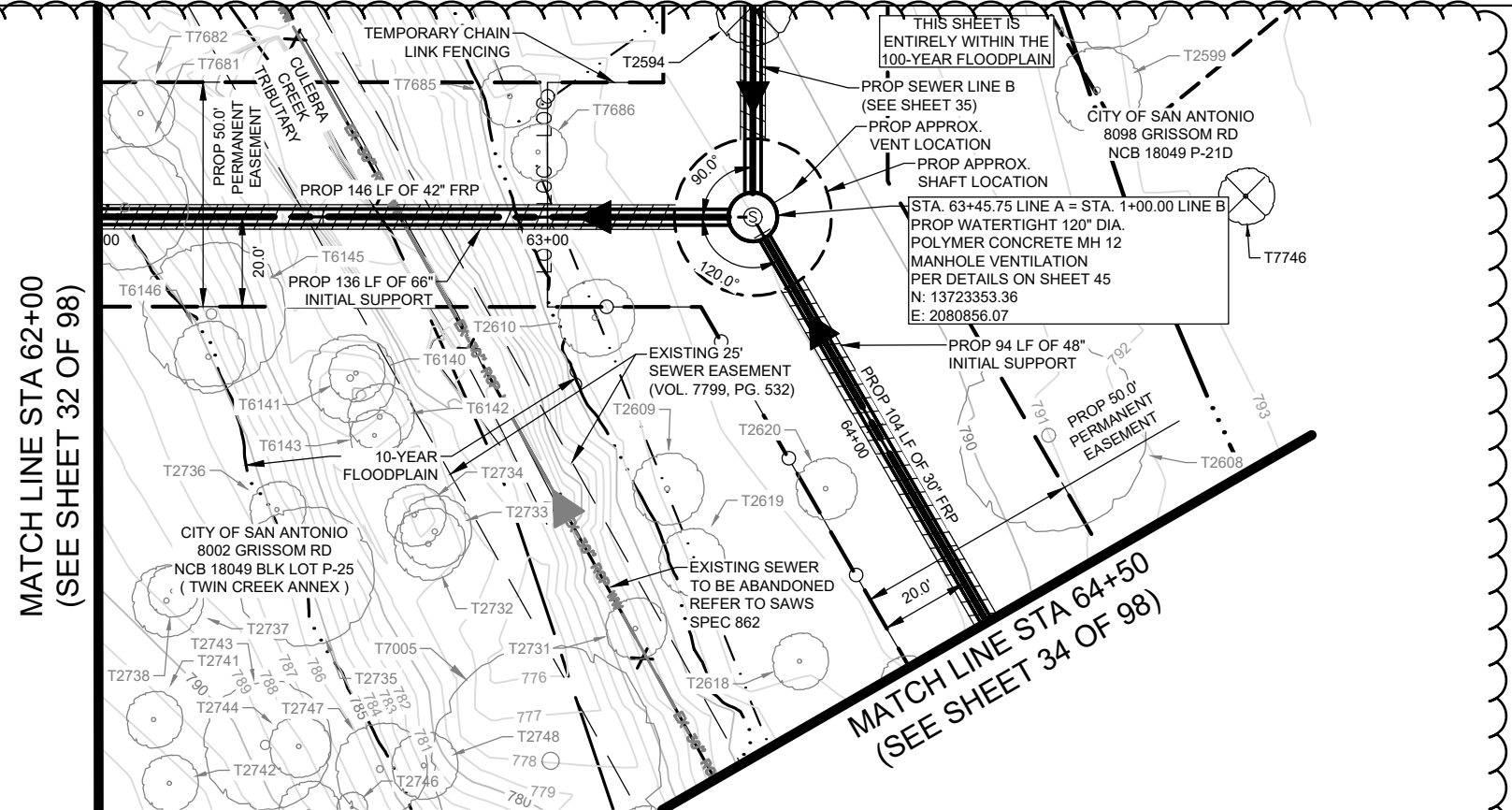
1. Replace sheet 33 dated 6/15/2023 with attached sheet 33 dated 3/6/2024.
2. Add attached sheet 34 dated 3/6/2024.
3. Replace sheet 34 dated 6/15/2023 with attached sheet 35 dated 3/6/2024.
4. Replace sheet 35 dated 6/15/2023 with attached sheet 36 dated 3/6/2024.
5. Replace sheet 41 dated 6/15/2023 with attached sheet 43 dated 3/6/2024.
6. Replace sheet 42 dated 6/15/2023 with attached sheet 44 dated 3/6/2024.

END OF ADDENDUM 2

This Addendum, including this one (1) page, is seven (7) pages in its entirety.

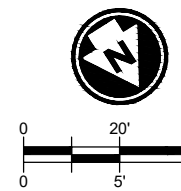
- Attachments:
- W-52 90% Draft Plans - Plan sheet 33 (1 page)
 - W-52 90% Draft Plans - Plan sheet 34 (1 page)
 - W-52 90% Draft Plans - Plan sheet 35 (1 page)
 - W-52 90% Draft Plans - Plan sheet 36 (1 page)
 - W-52 90% Draft Plans - Plan sheet 43 (1 page)
 - W-52 90% Draft Plans - Plan sheet 44 (1 page)

X:\Projects\0835_SAWS_W52_Culebra Creek\CAD\Sheets\2 sewer plan & profile.dwg



ESTIMATED QUANTITIES			
SPEC NO.	DESCRIPTION	UNIT	QUANTITY
SP 850	120" POLYMER CONCRETE MANHOLE (>30')	EA	1
857	30" FRP (ASTM D-3262) (SN 72) SANITARY SEWER LINE (>30')	LF	10
857	42" FRP (ASTM D-3262) (SN 72) SANITARY SEWER LINE (>30')	LF	10
866	QUANTITIES TO BE UPDATED FOR FORMAL 100% RE-SUBMITTAL		250
SS1850			1
SS2400			1
SS2420	48" TUNNEL EXCAVATION	LF	94
SS2420	66" TUNNEL EXCAVATION	LF	136
SS2440	48" TUNNEL INITIAL SUPPORT	LF	94
SS2440	66" TUNNEL INITIAL SUPPORT	LF	136
SS2450	30" FRP CARRIER PIPE FOR TUNNEL	LF	94
SS2450	42" FRP CARRIER PIPE FOR TUNNEL	LF	136

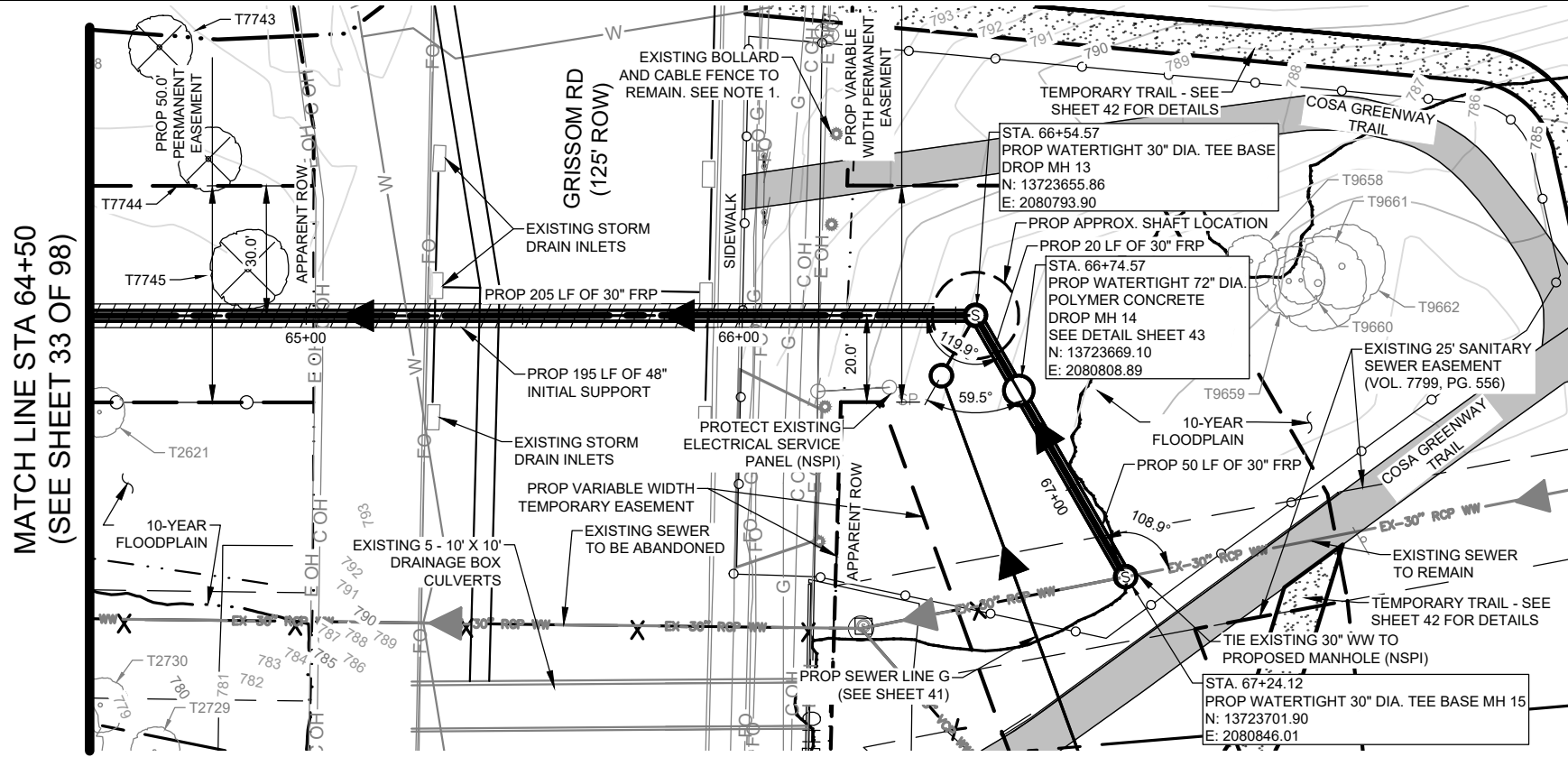
- NOTES:
- CONTRACTOR SHALL USE 4' ORANGE CONSTRUCTION SAFETY FENCE (OR ENGINEER APPROVED EQUAL) TO ISOLATE CONSTRUCTION AREA FROM THE PARK UNTIL CONSTRUCTION ACTIVITIES CEASE IN AREA.



K-FRIESE + ASSOCIATES
A LECHNER COMPANY
 40 NE Loop 410
 Mercantile Building, Suite 545
 San Antonio, Texas 78216
 P 210.491.2391 F 512.338.1784
 TBPE Firm #6535
 www.kfriese.com

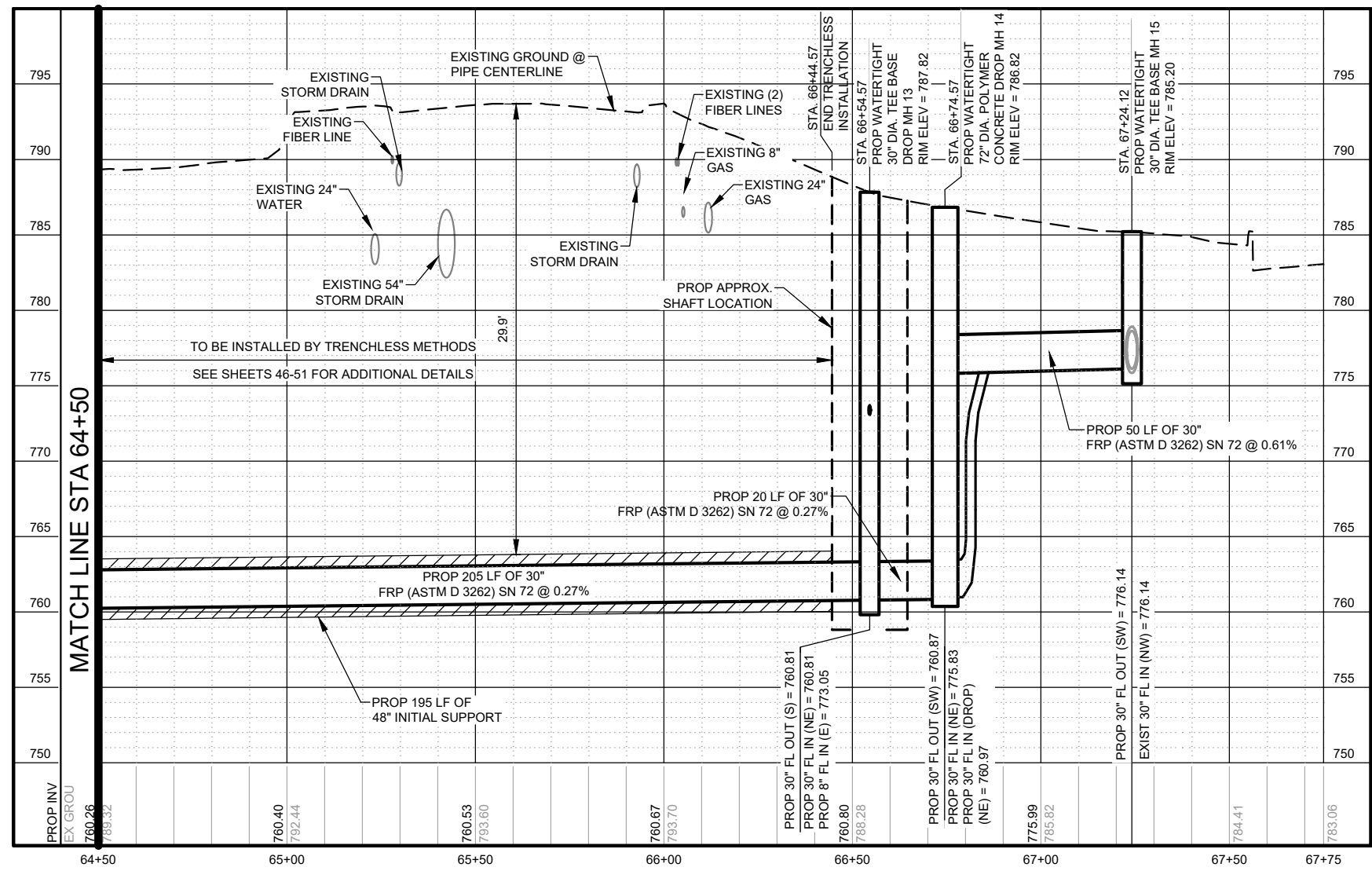
THESE DOCUMENTS ARE FOR INTERIM REVIEW AND NOT FOR CONSTRUCTION, BIDDING OR PERMIT PURPOSES.
RESPONSIBLE ENGINEER:
MICHAEL PERSYN, PE
TBPE NO. 96583
March 6, 2024

ADDENDUM 2	AF	MP	3/6/24	
No.	Revision	Drawn	Approved	Date
REVISIONS				
W-52 CULEBRA CREEK SEWER CAPACITY RELIEF LINE "A" PLAN & PROFILE STA 62+00 TO 64+50				
DEVELOPER:				
CONT.		BUDGET PROJ.		
SUBMITTED _____				
APPROVED _____				
MAP No.				SHEET
SECT. No.				33
DR. ED	CK. AF	JOB No. 22-4502		OF 98



ESTIMATED QUANTITIES				
SPEC NO.	DESCRIPTION	UNIT	QUANTITY	
550	TRENCH EXCAVATION SAFETY PROTECTION	LF	60	
SP 850	12" DIA POLYMER CONCRETE MANHOLE (WITH VORTEX INSERT)	LS	1	
853	30" TEE BASE MANHOLE (6'-10')	EA	1	
857	30" FRP (ASTM D 3262) (SN 72) SANITARY SEWER LINE (6'-10')	LF	28	
857			42	QUANTITIES TO BE UPDATED FOR FORMAL 100% RE-SUBMITTAL
857			10	
866	SANITARY SEWER POST TELEVISION INSPECTION (27" AND LARGER)	LF	275	
SS2400	ACCESS SHAFT (STATION 66+55)	EA	1	
SS2420	48" TUNNEL EXCAVATION	LF	195	
SS2440	48" TUNNEL INITIAL SUPPORT	LF	195	
SS2450	30" FRP CARRIER PIPE FOR TUNNEL	LF	195	

- NOTES:
- CONTRACTOR MAY REMOVE AND REPLACE BOLLARD AND CABLE FENCE AT HIS EXPENSE. REPLACEMENT SHALL BE EQUAL TO OR BETTER THAN EXISTING.
 - CONTRACTOR TO FENCE EXCAVATION ACTIVITIES AT MH 13 (STA 66+54.57) USING 6' TALL CHAIN LINK FENCE UNTIL EXCAVATION IS BACKFILLED COMPLETELY.



K-FRIESE + ASSOCIATES
 40 NE Loop 410
 Mercantile Building, Suite 545
 San Antonio, Texas 78216
 P 210.491.2391 F 512.338.1784
 TBPE Firm #6535
 www.kfriese.com

THESE DOCUMENTS ARE FOR INTERIM REVIEW AND NOT FOR CONSTRUCTION, BIDDING OR PERMIT PURPOSES.

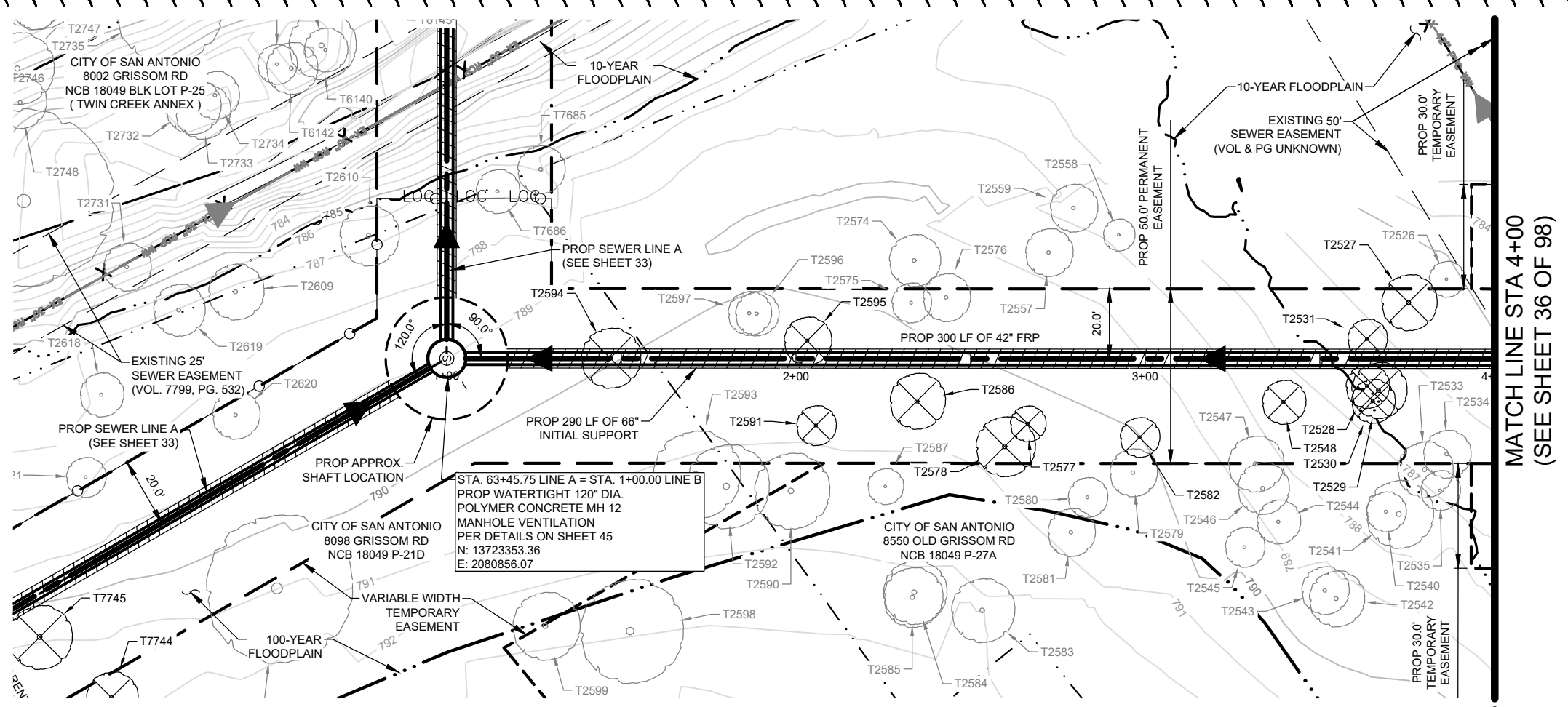
RESPONSIBLE ENGINEER:
MICHAEL PERSYN, PE
 TBPE NO. 96583
 March 6, 2024

ADDENDUM 2	AF	MP	3/6/24	
No.	Revision	Drawn	Approved	Date
REVISIONS				
W-52 CULEBRA CREEK SEWER CAPACITY RELIEF LINE "A" PLAN & PROFILE STA 64+50 TO END				
DEVELOPER: _____				
CONT. _____		BUDGET PROJ.		
SUBMITTED _____				
APPROVED _____				
MAP No. _____				SHEET 34 OF 98
DR. ED _____		CK. AF _____		
JOB No. 22-4502				

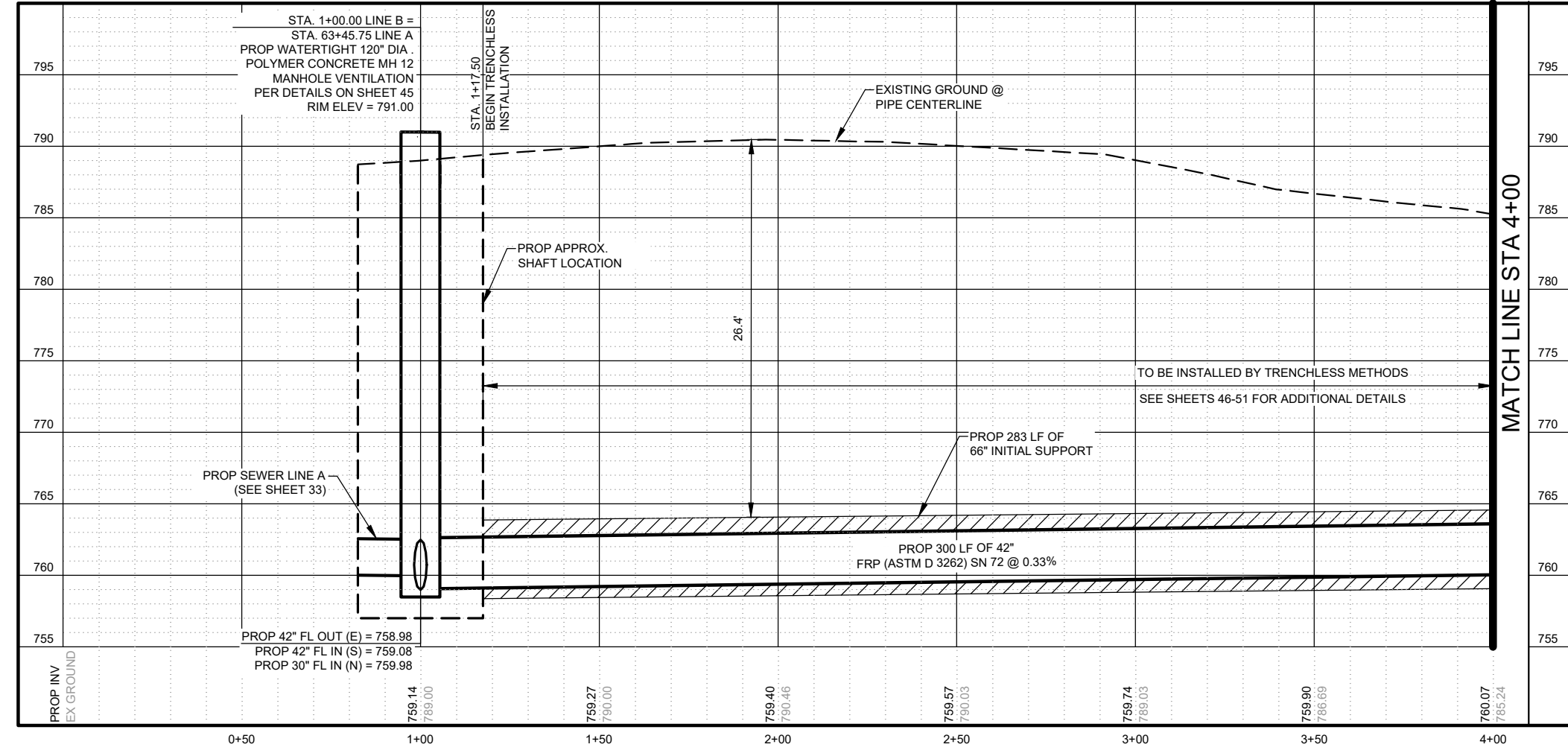
K:\Projects\0835-SAMS_HSP-5\Jobwp-Excep-CAD\Sheets\2-Sewer_Plan-&Profile.dwg

ESTIMATED QUANTITIES			
SPEC NO.	DESCRIPTION	UNIT	QUANTITY
857	QUANTITIES TO BE UPDATED FOR FORMAL 100% RE-SUBMITTAL		0
866			30
SS2420	66" TUNNEL EXCAVATION	LF	290
SS2440	66" TUNNEL INITIAL SUPPORT	LF	290
SS2450	42" FRP CARRIER PIPE FOR TUNNEL	LF	290

- NOTES:
- CONTRACTOR SHALL REDUCE TREE CLEARING AND PRUNING ALONG LINE "B" TO MINIMUM NECESSARY FOR CONSTRUCTION ACCESS.
 - CONTRACTOR SHALL USE 4' ORANGE CONSTRUCTION SAFETY FENCE (OR ENGINEER APPROVED EQUAL) TO ISOLATE CONSTRUCTION AREA FROM THE PARK UNTIL CONSTRUCTION ACTIVITIES CEASE IN AREA.



MATCH LINE STA 4+00
(SEE SHEET 36 OF 98)



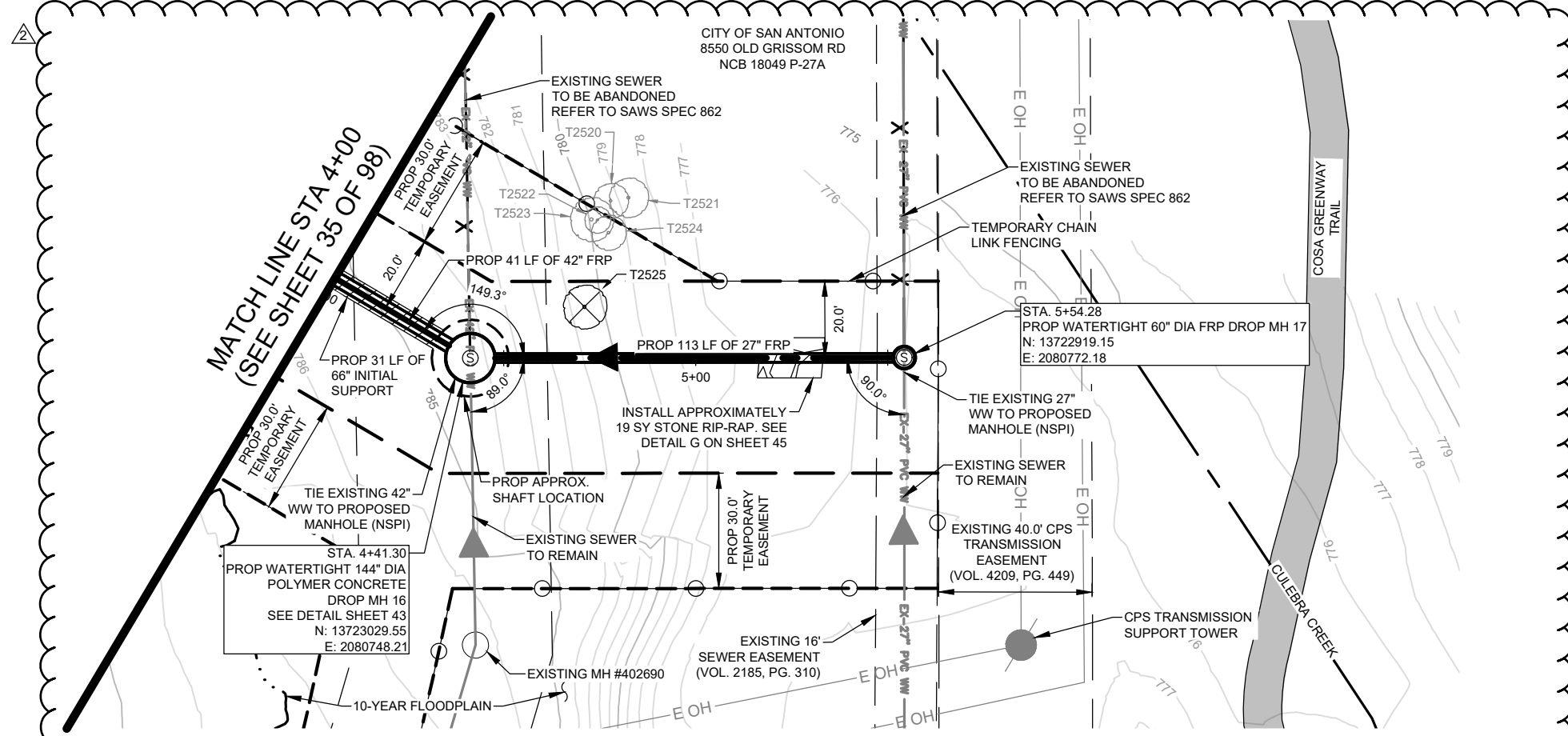
K-FRIESE + ASSOCIATES
40 NE Loop 410
 Mercantile Building, Suite 545
 San Antonio, Texas 78216
 P 210.491.2391 F 512.338.1784
 TBPE Firm #6535
 www.kfriese.com

THESE DOCUMENTS ARE FOR INTERIM REVIEW AND NOT FOR CONSTRUCTION, BIDDING OR PERMIT PURPOSES.

RESPONSIBLE ENGINEER:
MICHAEL PERSYN, PE
 TBPE NO. 96583
 March 6, 2024

ADDENDUM 2	AF	MP	3/6/24	
No.	Revision	Drawn	Approved	Date
REVISIONS				
W-52 CULEBRA CREEK SEWER CAPACITY RELIEF LINE "B" PLAN & PROFILE BEGIN TO STA 4+00				
DEVELOPER:				
CONT.		BUDGET PROJ.		
SUBMITTED _____				
APPROVED _____				
MAP No.				SHEET 35 OF 98
SECT. No.				
DR. ED	CK. AF	JOB No. 22-4502		

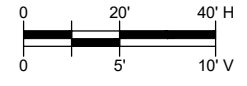
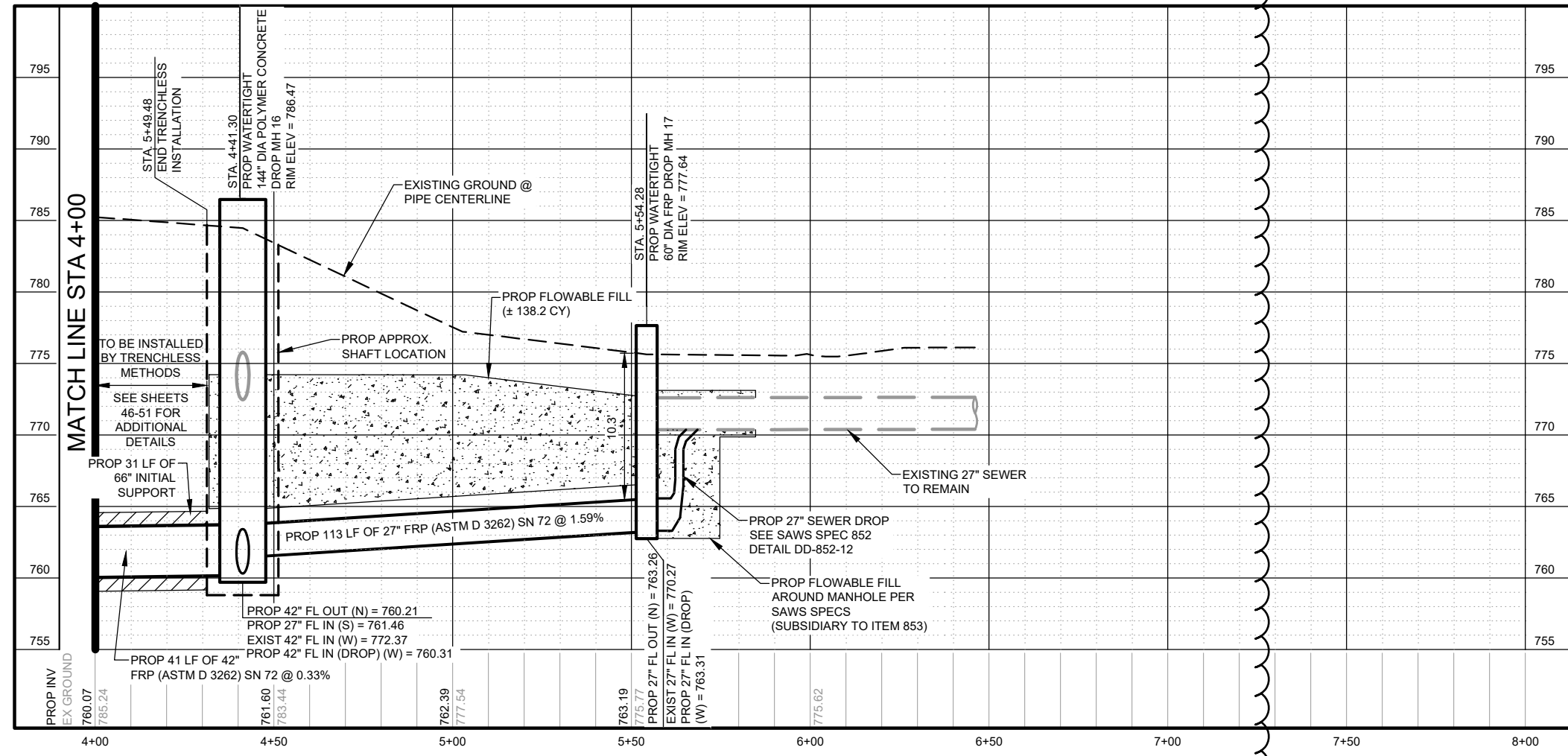
X:\Projects\0835_SAWS W52 Culebra Creek\CAD\Sheets\2 sewer plan & profile.dwg



ESTIMATED QUANTITIES				
SPEC NO.	DESCRIPTION	UNIT	QUANTITY	
299	FLOWABLE FILL (LOW STRENGTH)	CY	138.2	
SP 432.1	RIPRAP (STONE PROTECTION) (15 IN) (TXDOT SPEC)	SY	19	
550	TRENCH EXCAVATION SAFETY PROTECTION	LF	103	
SP 850	144" DIA POLYMER CONCRETE MANHOLE (WITH VORTEX INSERT)	LS	1	
853	60" FRP DROP MANHOLE (14'-18')	EA	1	
857	27" FRP (ASTM D-3262) (SN 72) SANITARY SEWER LINE (10'-14')	LF	34	
857	27" FRP (ASTM D-3262) (SN 72) SANITARY SEWER LINE (14'-18')	LF	41	
857	27" FRP (ASTM D-3262) (SN 72) SANITARY SEWER LINE (22'-25')	LF	30	
857	42" FRP (ASTM D-3262) (SN 72) SANITARY SEWER LINE (25'-30')	LF	10	
866	SANITARY SEWER POST TELEVISION INSPECTION (27" AND LARGER)	LF	154	
SS2400	ACCESS SHAFT (STATION 4+41)	EA	1	
SS2420	66" TUNNEL EXCAVATION	LF	31	
SS2440	66" TUNNEL INITIAL SUPPORT	LF	31	
SS2450	42" FRP CARRIER PIPE FOR TUNNEL	LF	31	

QUANTITIES TO BE UPDATED FOR FORMAL 100% RE-SUBMITTAL

- NOTES:
- CONTRACTOR SHALL REDUCE CLEARING ALONG LINE "B" TO MINIMUM NECESSARY FOR CONSTRUCTION ACCESS.



K-FRIESE + ASSOCIATES
 40 NE Loop 410
 Mercantile Building, Suite 545
 San Antonio, Texas 78216
 P 210.491.2391 F 512.338.1784
 TBPE Firm #6535
 www.kfriese.com

THESE DOCUMENTS ARE FOR INTERIM REVIEW AND NOT FOR CONSTRUCTION, BIDDING OR PERMIT PURPOSES.

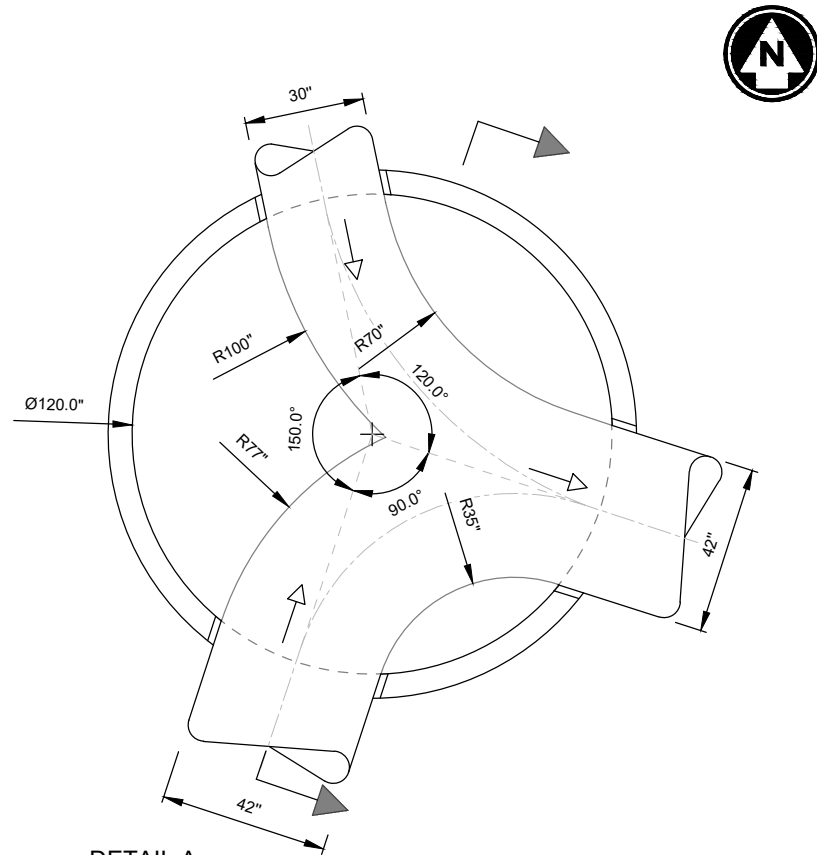
RESPONSIBLE ENGINEER:
MICHAEL PERSYN, PE
 TBPE NO. 96583
 March 6, 2024

ADDENDUM 2	AF	MP	3/6/24	
No.	Revision	Drawn	Approved	Date

REVISIONS

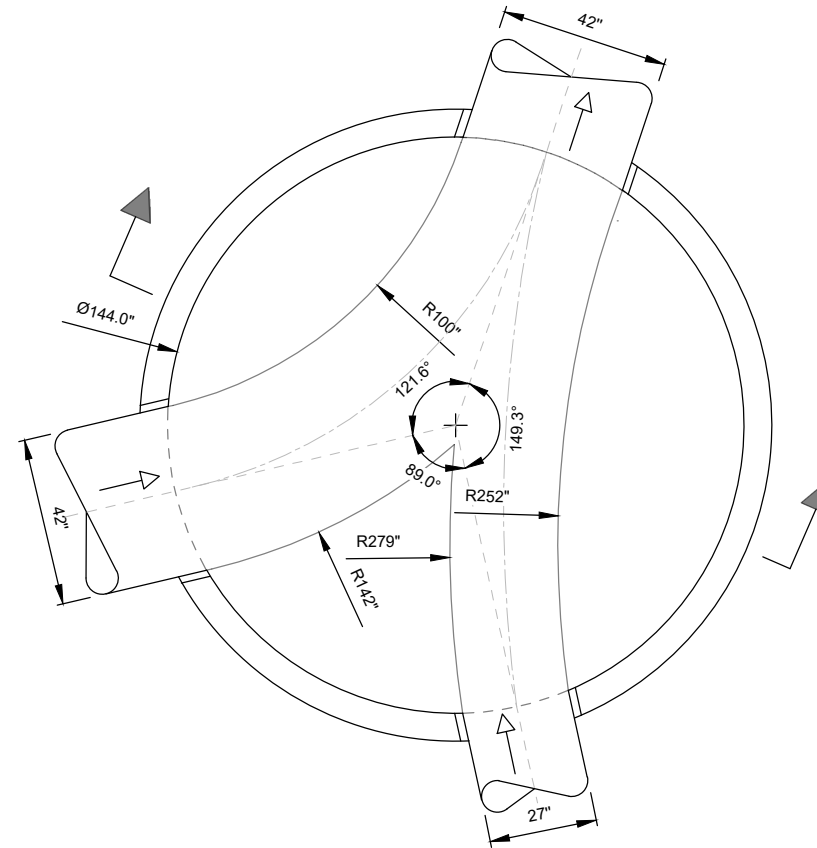
W-52 CULEBRA CREEK SEWER CAPACITY RELIEF LINE "B" PLAN & PROFILE STA 4+00 TO END

DEVELOPER:		BUDGET PROJ.	
SUBMITTED _____		APPROVED _____	
MAP No.	SECT. No.		SHEET 36
DR. ED	CK. AF	JOB No. 22-4502	OF 98



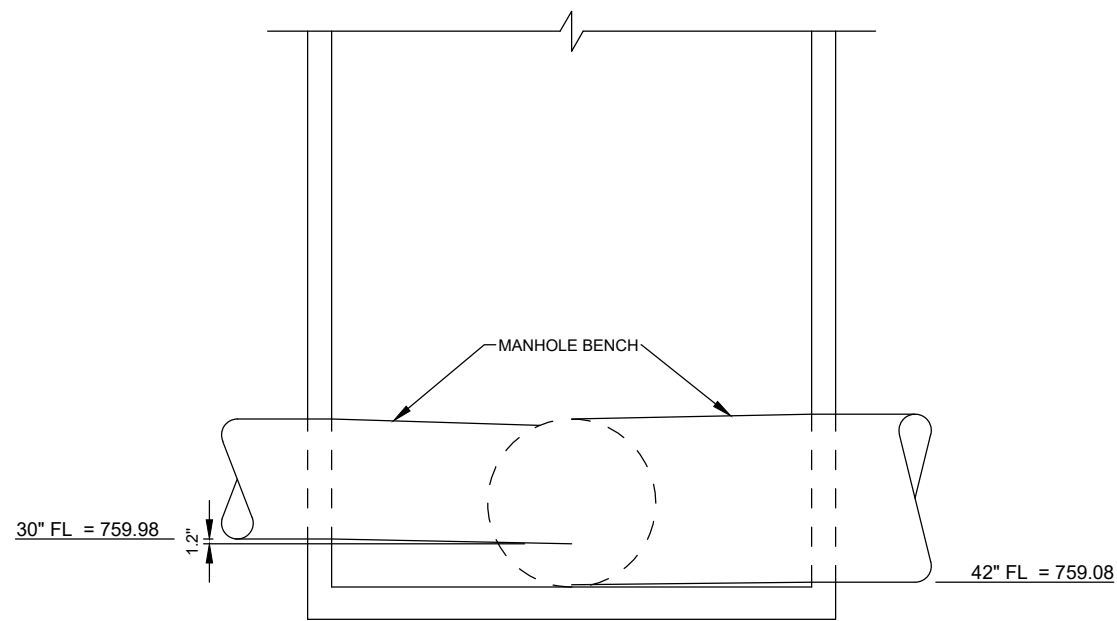
DETAIL A
MANHOLE 12 - INVERT VIEW

SCALE: 1/4"=1'



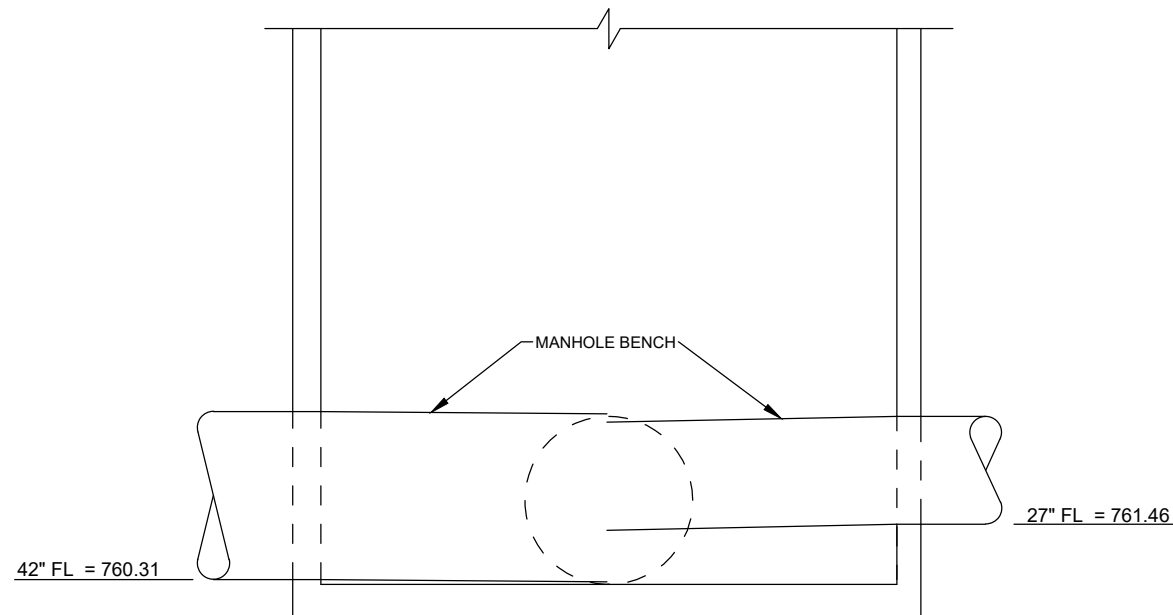
DETAIL C
MANHOLE 15 - INVERT VIEW

SCALE: 1/4"=1'



DETAIL B
MANHOLE 12 - SECTION VIEW

SCALE: 1/4"=1'



DETAIL D
MANHOLE 15 - SECTION VIEW

SCALE: 1/4"=1'



40 NE Loop 410
Mercantile Building, Suite 545
San Antonio, Texas 78216
P 210.491.2391 F 512.338.1784
TBPPE Firm #6535
www.kfriese.com

THESE DOCUMENTS ARE FOR INTERIM REVIEW AND NOT FOR CONSTRUCTION, BIDDING OR PERMIT PURPOSES.

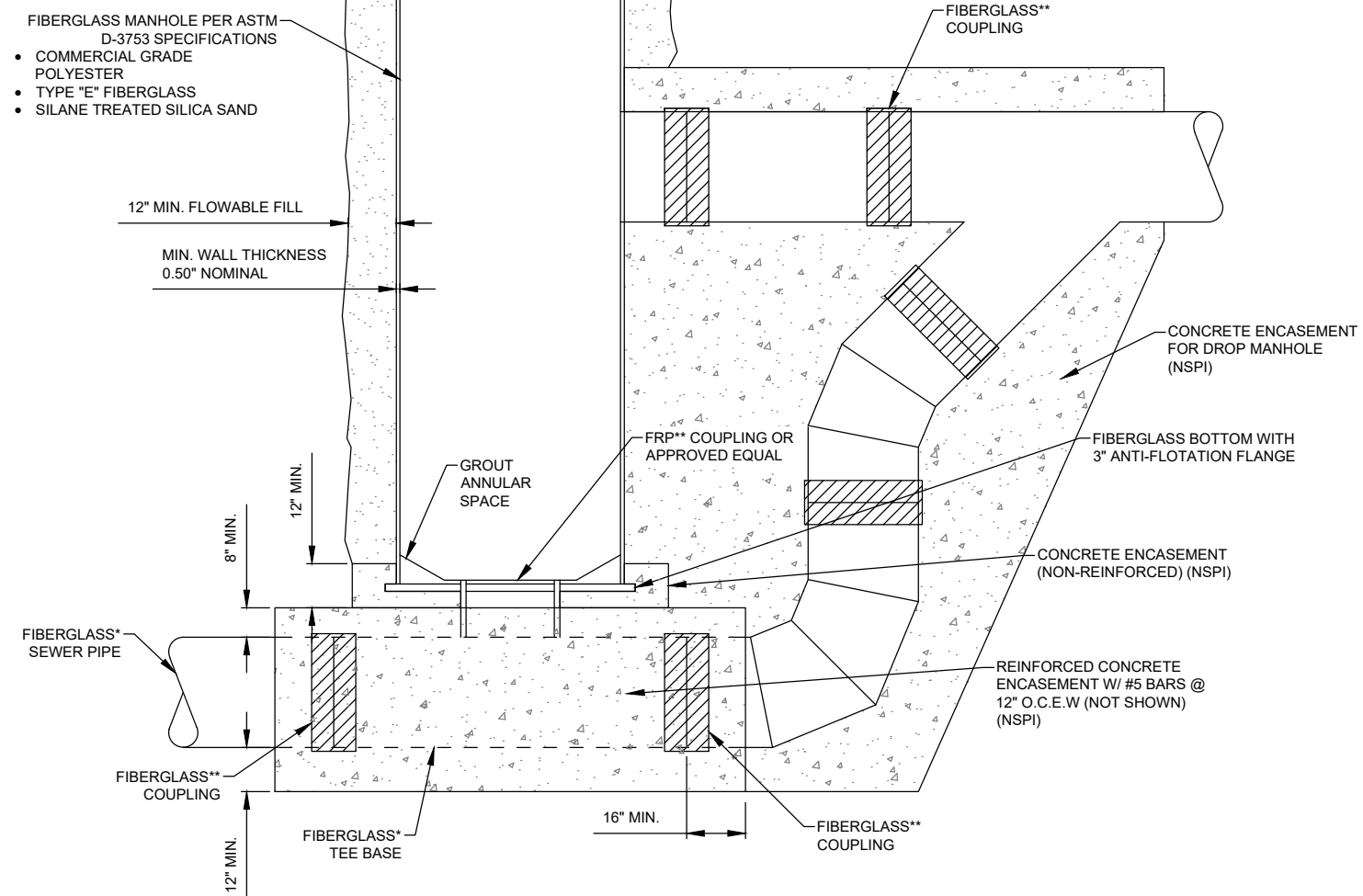
RESPONSIBLE ENGINEER:
MICHAEL PERSYN, PE
TBPPE NO. 96583
March 6, 2024

ADDENDUM 2	AF	MP	3/6/24
No.	Revision	Drawn	Approved

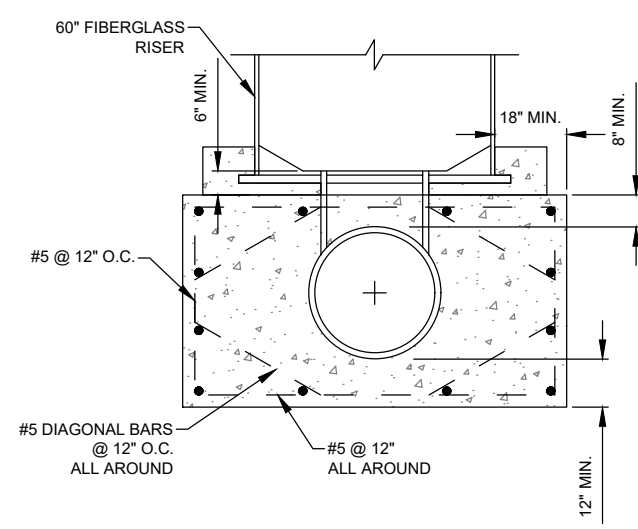
REVISIONS	
	W-52 CULEBRA CREEK SEWER CAPACITY RELIEF MH 12 AND MH 15 INVERT DETAILS

DEVELOPER:	
CONT.	BUDGET PROJ.
SUBMITTED _____	
APPROVED _____	
MAP No.	SHEET
SECT. No.	43
DR. ED	CK. AF
JOB No. 22-4502	OF 98

- * FIBERGLASS (FRP) SEWER PIPE MEETING THE REQUIREMENTS OF ASTM D3743 FOR DIRECT BURY INSTALLATION
- ** FIBERGLASS (FRP) PIPE JOINTS USING FLEXIBLE ELASTOMERIC SEALS MEETING THE REQUIREMENTS OF ASTM D4151



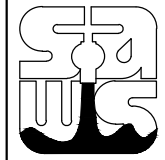
- NOTES:
1. ENCASEMENT TO BE DESIGNED TO RESIST ALL TEE BASE DEFORMATIONS AND IS TO EXTEND PAST THE FIRST JOINT ON EITHER SIDE OF THE TEE BASE BY 1-FT TO 3-FT.
 2. ALL CONCRETE ENCASEMENT REQUIRED FOR TEE BASE MANHOLES SHALL BE CONSIDERED INCIDENTAL TO THE COST OF THE MANHOLES.
 3. BACKFILL AROUND MANHOLE SHALL BE FLOWABLE (LOW STRENGTH) WITH A MINIMUM THICKNESS OF 12-INCHES OF FINAL GRADE. THIS COST SHALL BE INCIDENTAL TO THE COST OF THE MANHOLE.
 4. OVER EXCAVATION WITHIN AREAS FOR PLACEMENT OF SANITARY SEWER MANHOLES AND STRUCTURES SHALL BE BACKFILLED PER DETAIL THIS SHEET WITH REGARDS TO FLOWABLE FILL AND ASTM D448 AGGREGATE. THIS COST SHALL BE INCIDENTAL TO THE COST OF THE MANHOLE OR STRUCTURE.



DETAIL E
FRP EXTERNAL DROP
SCALE: 1/4"=1'

K-FRIESE + ASSOCIATES
40 NE Loop 410
 Mercantile Building, Suite 545
 San Antonio, Texas 78216
 P 210.491.2391 F 512.338.1784
 TBPE Firm #6535
 www.kfriese.com

THESE DOCUMENTS ARE FOR INTERIM REVIEW AND NOT FOR CONSTRUCTION, BIDDING OR PERMIT PURPOSES.
RESPONSIBLE ENGINEER:
MICHAEL PERSYN, PE
TBPE NO. 96583
March 6, 2024

ADDENDUM 2	AF	MP	3/6/24	
No.	Revision	Drawn	Approved	Date
REVISIONS				
 W-52 CULEBRA CREEK SEWER CAPACITY RELIEF EXTERNAL DROP DETAILS				
DEVELOPER:				
CONT.		BUDGET PROJ.		
SUBMITTED _____				
APPROVED _____				
MAP No.				SHEET
SECT. No.				44
DR. ED	CK. AF	JOB No. 22-4502		OF 98